

# Northern Ontario Farm Trial



## May 2018 UAV Flight Survey

Total Flights: 3

Total Images Captured: 901

Camera Model: S.O.D.A.\_10.6\_5472x3648 (RGB)

Average Ground Sampling Distance: 4.56 cm / 1.79 in

UAV: senseFly eBee

Area Covered: 0.822 km<sup>2</sup> / 82.22 ha / 0.317 sq. mi. / 203.1 acres

Output Coordinate System: WGS84 / UTM Zone 17N



Contours - 5m Intervals 100 cm Resolution



Contours - 1m Intervals 100 cm Resolution



Contours - 0.5 m Intervals 100 cm Resolution

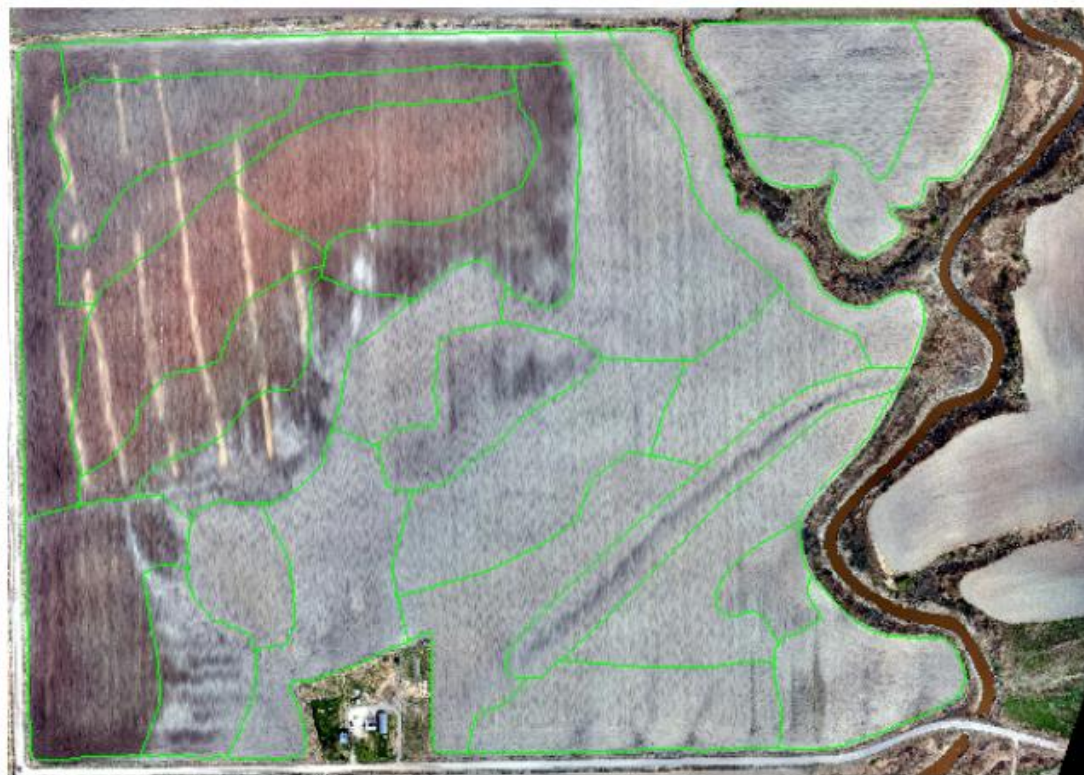


**STORY** environmental & geomatics

© Story Environmental Inc. & Story Geomatics Inc.

# Soil Zone Map

R-FRY-1



Date: 2019-01-14  
Field: R-FRY-1  
Farm: Rental Frey  
Grower: Grant Farms Corp. G1200  
Area: 180.46 ac  
Lat: 47.68586°N  
Lon: 079.55986°W



One in = 628 feet  
0 211 421 632 843 1054



Boundary

( 180.46 ac)

# Northern Ontario Farm Trial



## 2018 UAV Flight Survey

Total Flights: 6 (18 minute average flight duration)

Total Images Captured: 4841

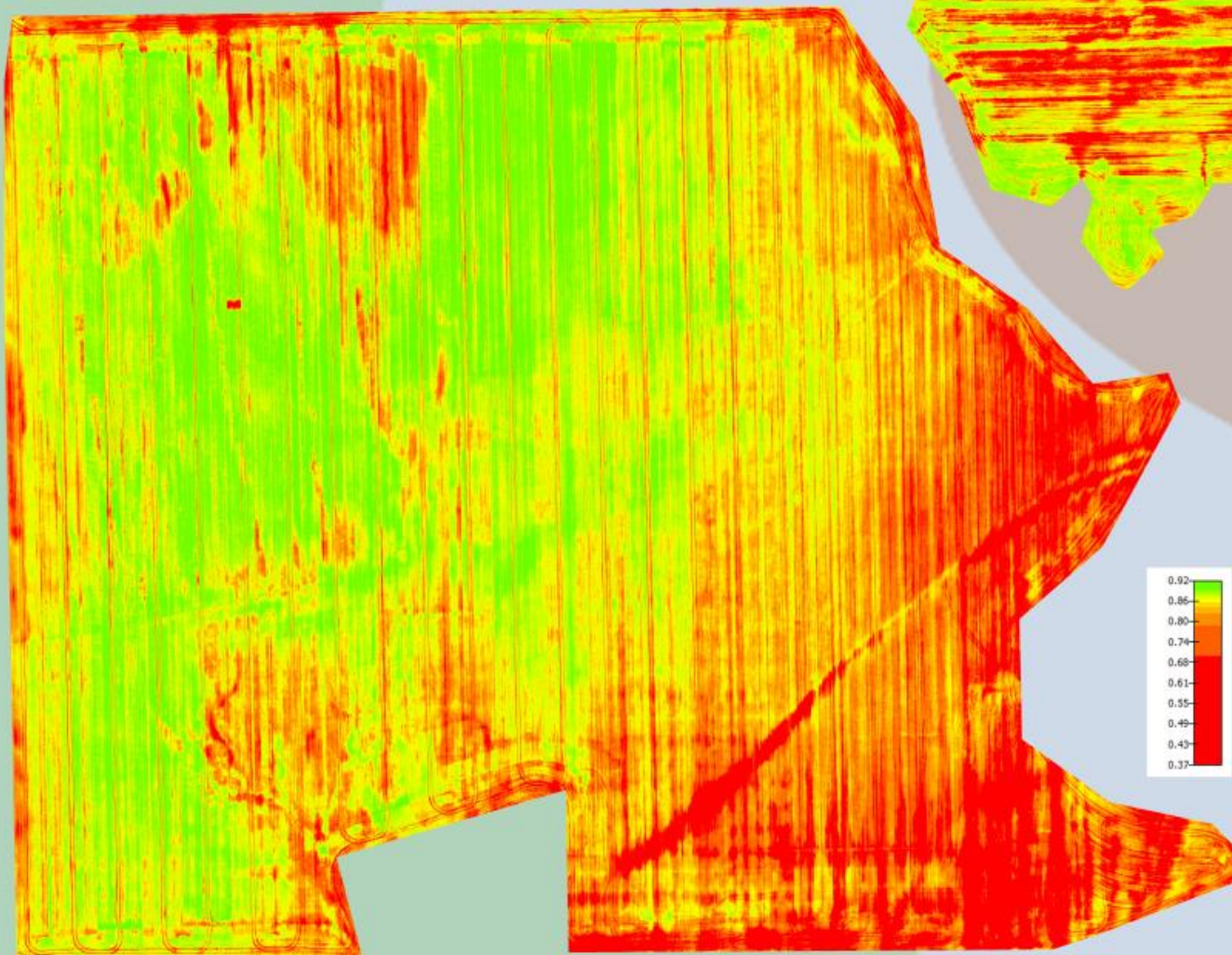
Camera Model: S.O.D.A RGB/Sequoia Multispectral

Average Ground Sampling Distance: 4.56 cm / 1.79 in

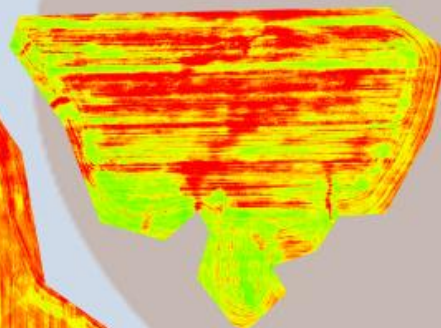
UAV: senseFly eBee

Area Covered: 0.822 km<sup>2</sup> / 82.22 ha / 0.317 sq. mi. / 203.1 acres

Output Coordinate System: WGS84 / UTM Zone 17N



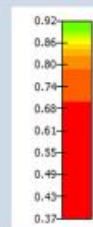
July 11, 2018 - Normalized Difference Vegetation Index (NIR - RED) / (NIR + RED) of Crop area



July 11, 2018 - RGB Imagery



May 24, 2018 - RGB Imagery



**STORY**  
environmental & geomatics