

CONNECT-ON

ENCOURAGING CONNECTIONS ACROSS ONTARIO

WILLIAM DUNSTAN, LEAD RESEARCHER AT NORTHERN POLICY INSTITUTE



What is ConnectON?

- ConnectON is a supply chain mapping tool that provides geo-mapped data to support investment, business retention, and growth across Ontario
- Information is provided for three industries (with capacity to add more): agrifood, manufacturing, and tourism
- ConnectON was developed by the Golden Horseshoe Food and Farming Alliance (GHFFA) in Southern Ontario. Northern Policy Institute brings the tool to Northern Ontario through the ConnectNORTH program.



ConnectNORTH Data Sources

Municipal Data



Business directories

Third Party Data



Destination Northern Ontario
FarmNorth

Open Source Data



Trillium Network for Advanced
Manufacturing, University of Guelph
Northern Ontario Farm Services Map

Other Government Data



Government of Canada
Indigenous Business Directory

OMAFRA Farm Business Registration Data



Indigenous Data Sources



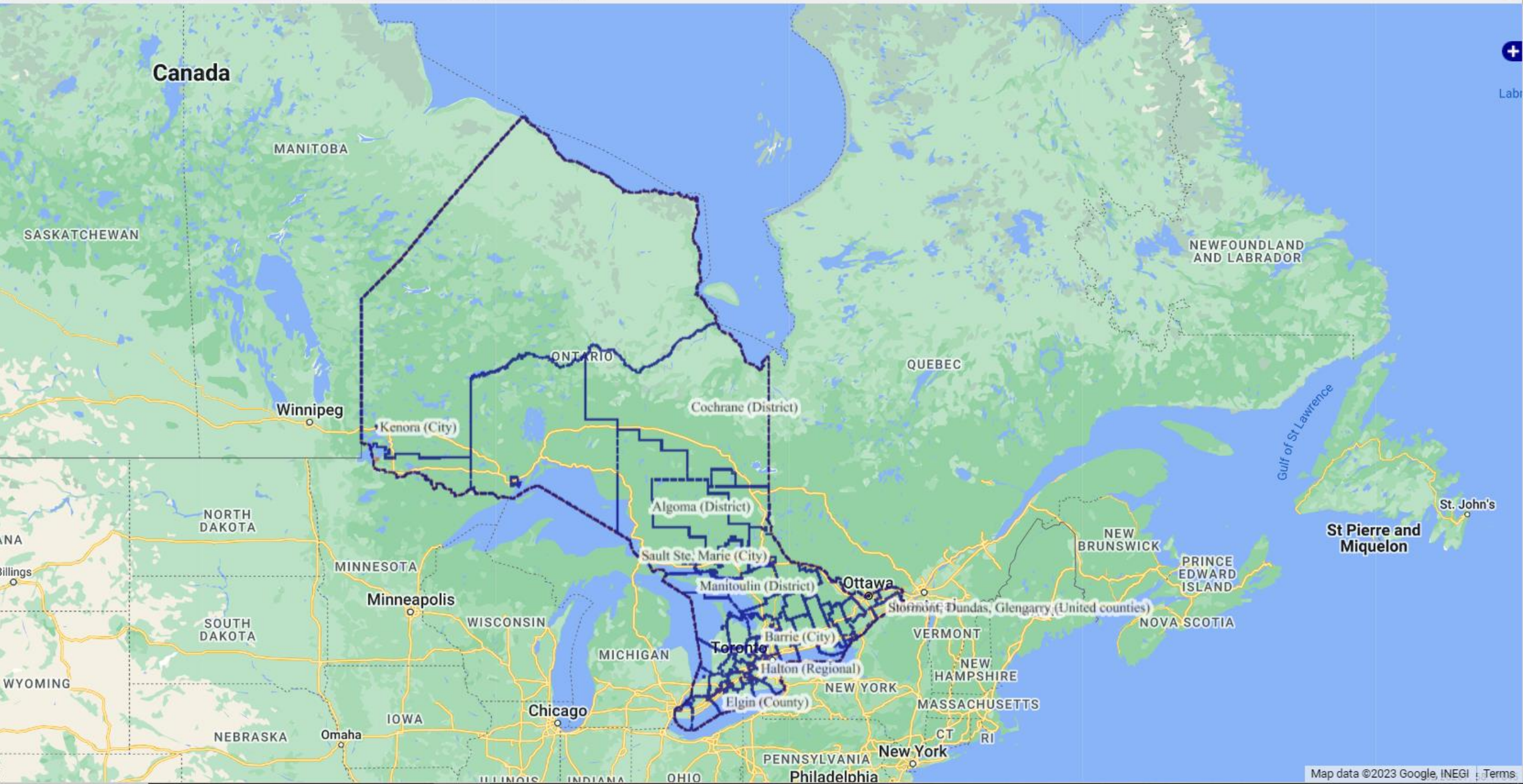
Indigenous Tourism Ontario
Waubetek Business Development Corporation

How can you use ConnectON?

- Identify supply chain gaps and opportunities:
 - Connect local businesses along the supply chain
 - Target economic development efforts
- Re-purpose this data to support local initiatives:
 - Develop supply chain profiles and fact sheets
 - Create interactive mapping



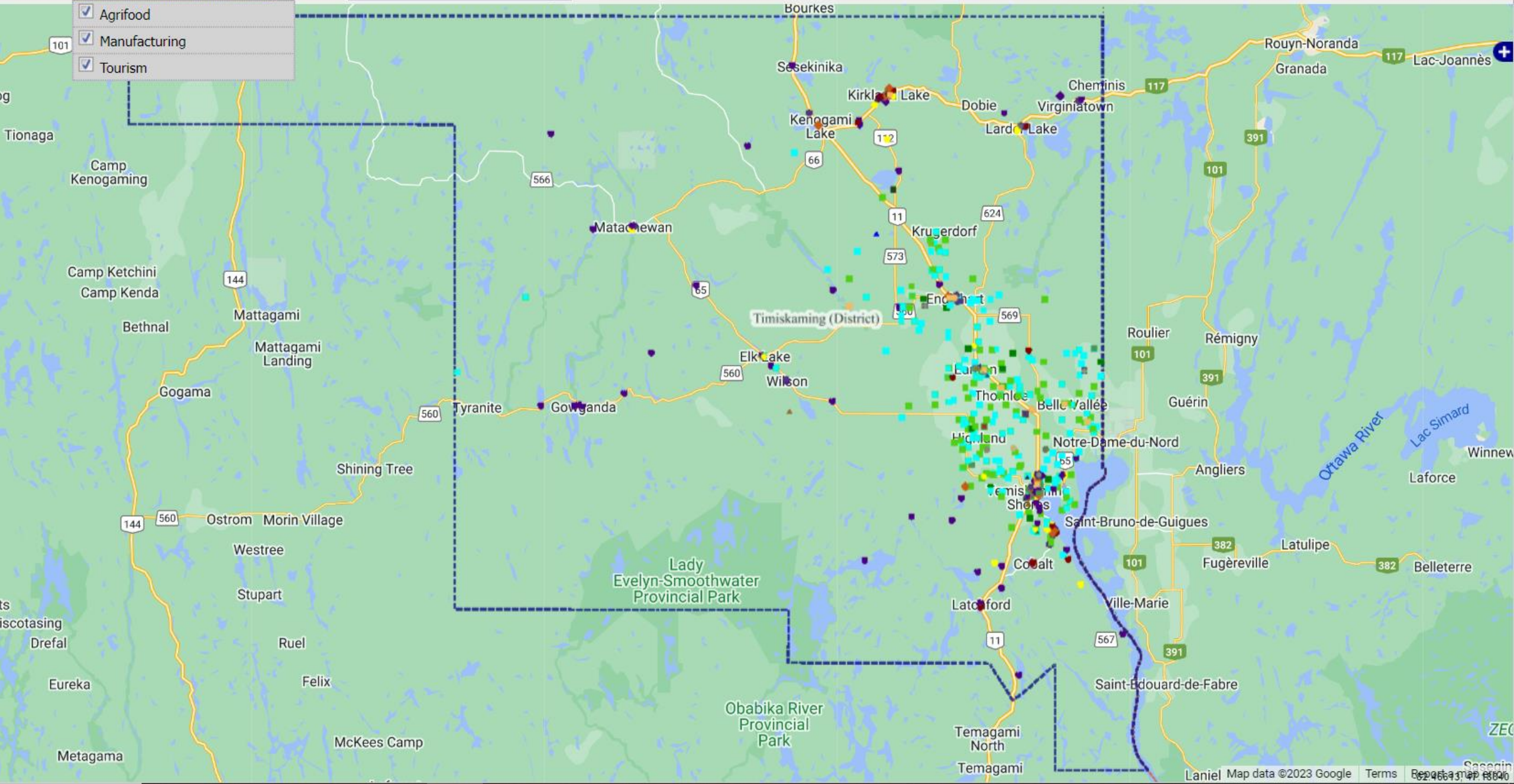
Sectors: First select industry sectors ...
Area: Second select geographic area ..



Sectors: **Agrifood, Manufacturing, Tourism**

- Agrifood
- Manufacturing
- Tourism

Area: Timiskaming (District)

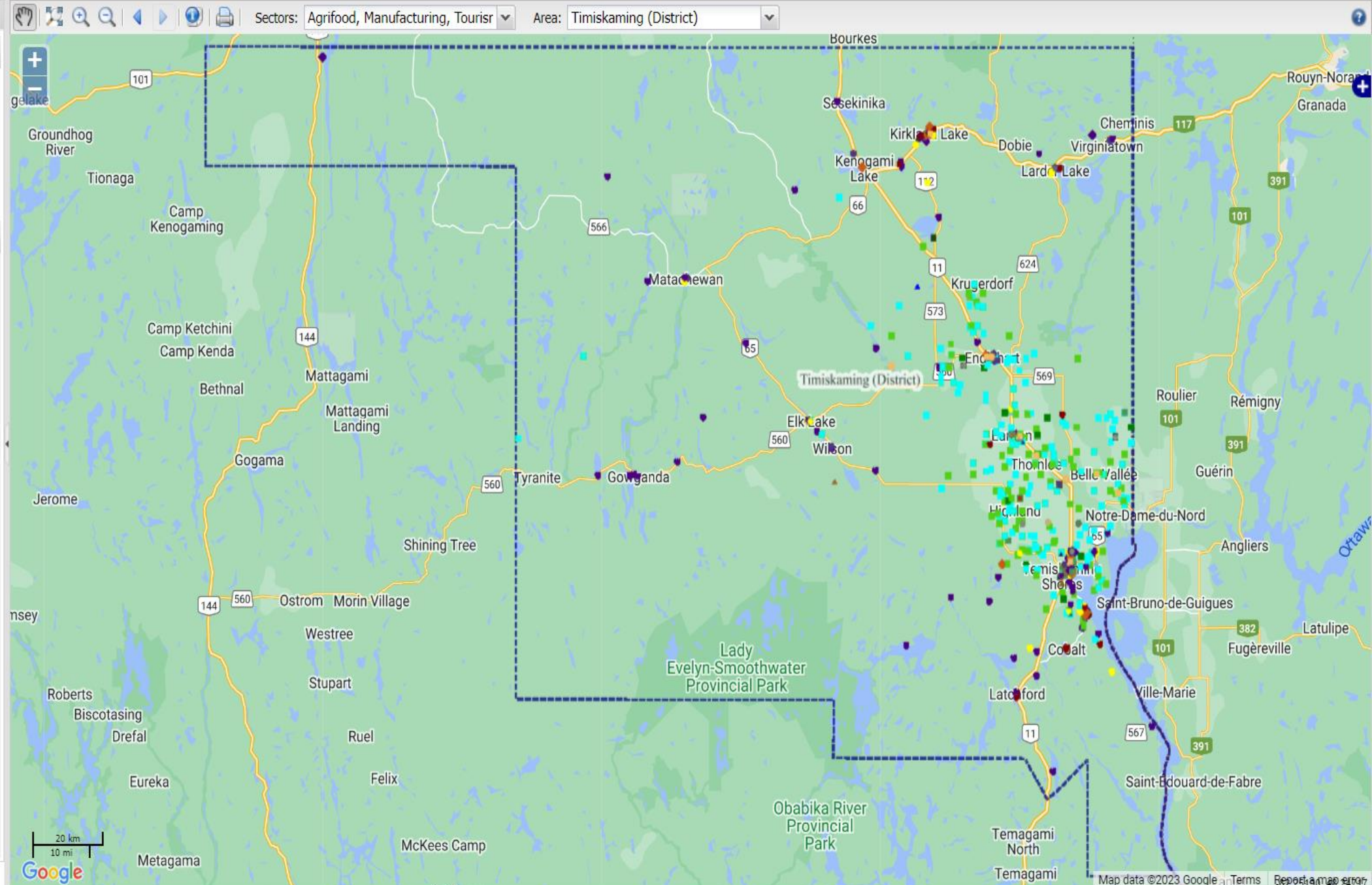


Asset legend symbols

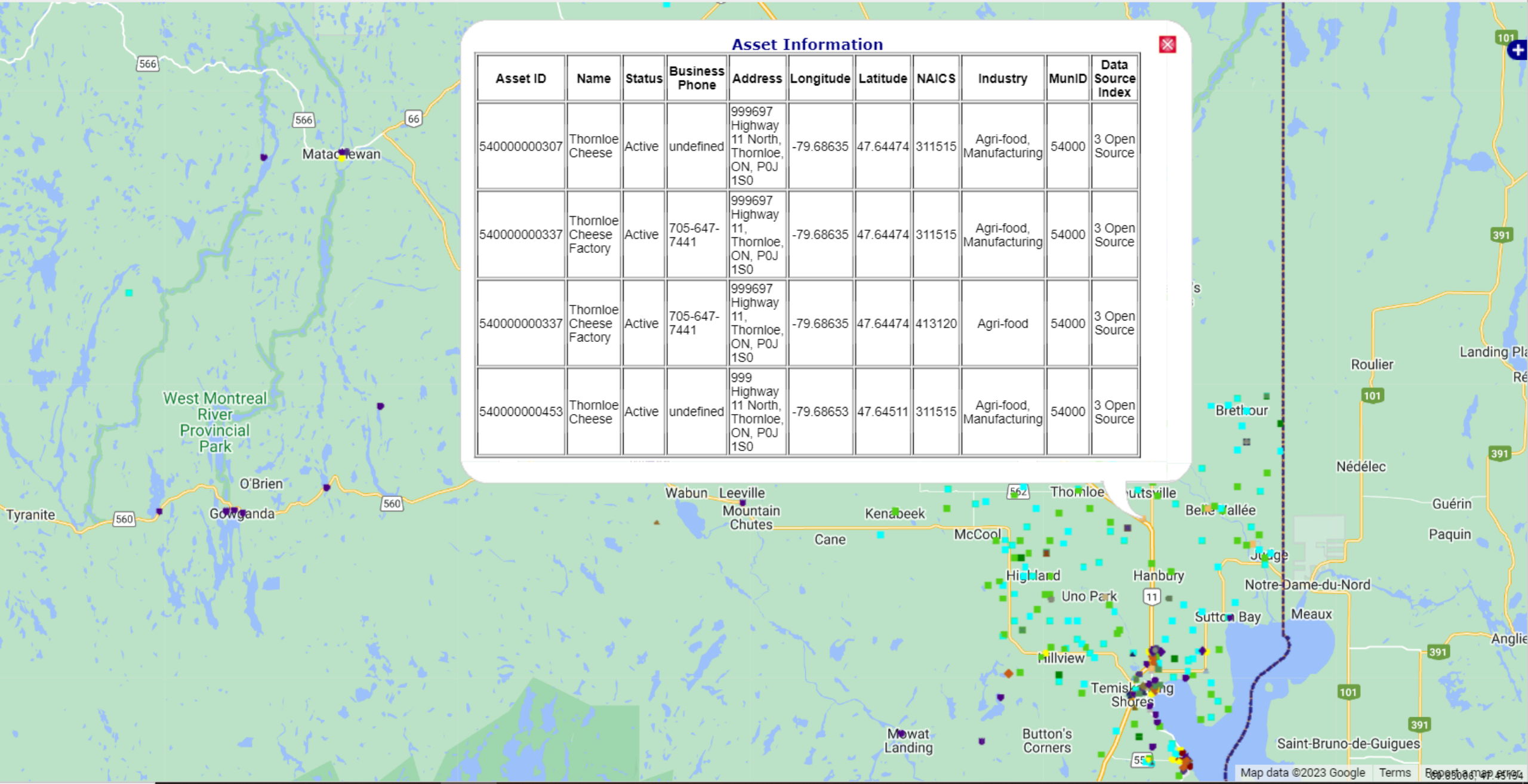
- - AgriFood
- △ - Manufacturing
- ∪ - Tourism
- - AgriFood & Manufacturing
- ◇ - AgriFood & Tourism
- ⊕ - Manufacturing & Tourism
- ☆ - AgriFood & Manufacturing & Tourism

Asset legend colors

- 110-Agriculture
- 111-Crop Production
- 112-Animal production and aquaculture
- 113-Forestry and logging
- 115-Support activities for agriculture and forestry
- 211-Oil and gas extraction
- 212-Mining and quarrying (except oil and gas)
- 213-Support activities for mining, and oil and gas extrac
- 237-Heavy and civil engineering construction
- 311-Food manufacturing
- 312-Beverage and tobacco product manufacturing
- 313-Textile mills
- 314-Textile product mills
- 315-Clothing manufacturing
- 316-Leather and allied product manufacturing
- 321-Wood product manufacturing
- 322-Paper manufacturing
- 323-Printing and related support activities
- 324-Petroleum and coal product manufacturing
- 325-Chemical manufacturing
- 326-Plastics and rubber products manufacturing
- 327-Non-metallic mineral product manufacturing
- 331-Primary metal manufacturing
- 332-Fabricated metal product manufacturing
- 333-Machinery manufacturing
- 334-Computer and electronic product manufacturing
- 335-Electrical equipment, appliance and component mar
- 336-Transportation equipment manufacturing
- 337-Furniture and related product manufacturing
- 339-Miscellaneous manufacturing
- 411-Farm product merchant wholesalers
- 413-Food, beverage and tobacco merchant wholesalers
- 417-Machinery, equipment and supplies merchant whole
- 418-Miscellaneous merchant wholesalers



Sectors: Agrifood, Manufacturing, Tourisr
 Area: Timiskaming (District)



Asset Information

Asset ID	Name	Status	Business Phone	Address	Longitude	Latitude	NAICS	Industry	MunID	Data Source Index
540000000307	Thornloe Cheese	Active	undefined	999697 Highway 11 North, Thornloe, ON, P0J 1S0	-79.68635	47.64474	311515	Agri-food, Manufacturing	54000	3 Open Source
540000000337	Thornloe Cheese Factory	Active	705-647-7441	999697 Highway 11, Thornloe, ON, P0J 1S0	-79.68635	47.64474	311515	Agri-food, Manufacturing	54000	3 Open Source
540000000337	Thornloe Cheese Factory	Active	705-647-7441	999697 Highway 11, Thornloe, ON, P0J 1S0	-79.68635	47.64474	413120	Agri-food	54000	3 Open Source
540000000453	Thornloe Cheese	Active	undefined	999 Highway 11 North, Thornloe, ON, P0J 1S0	-79.68653	47.64511	311515	Agri-food, Manufacturing	54000	3 Open Source

Data Query

Filter by NAICS
Entry NAICSs and press Enter ...

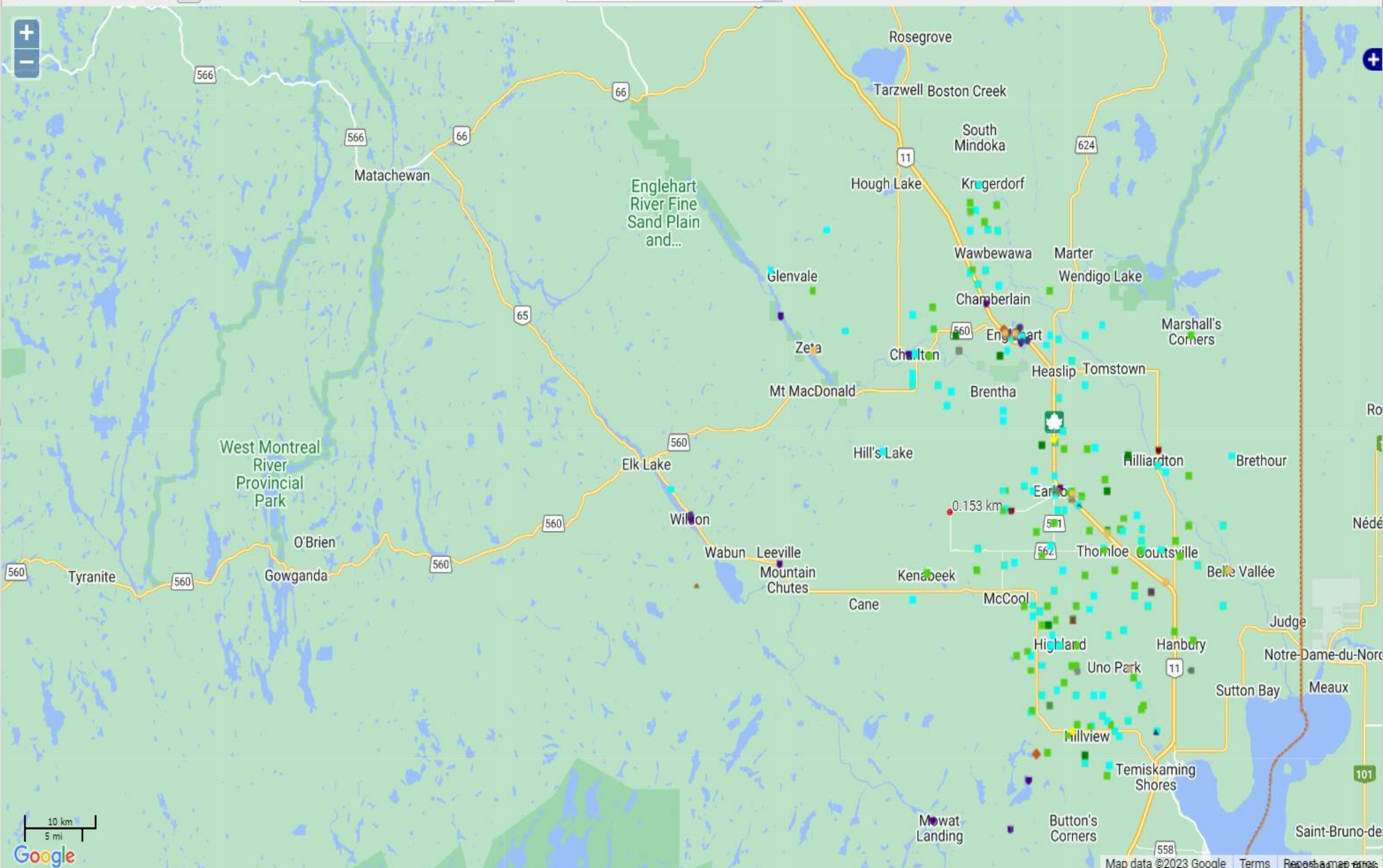
Filter by geometry
 No geometry
 Box
 Circle radius: 40 km
After modify the size field, press enter

Filter by asset name
Entry asset name and press Enter ...

Number of selected assets: 286

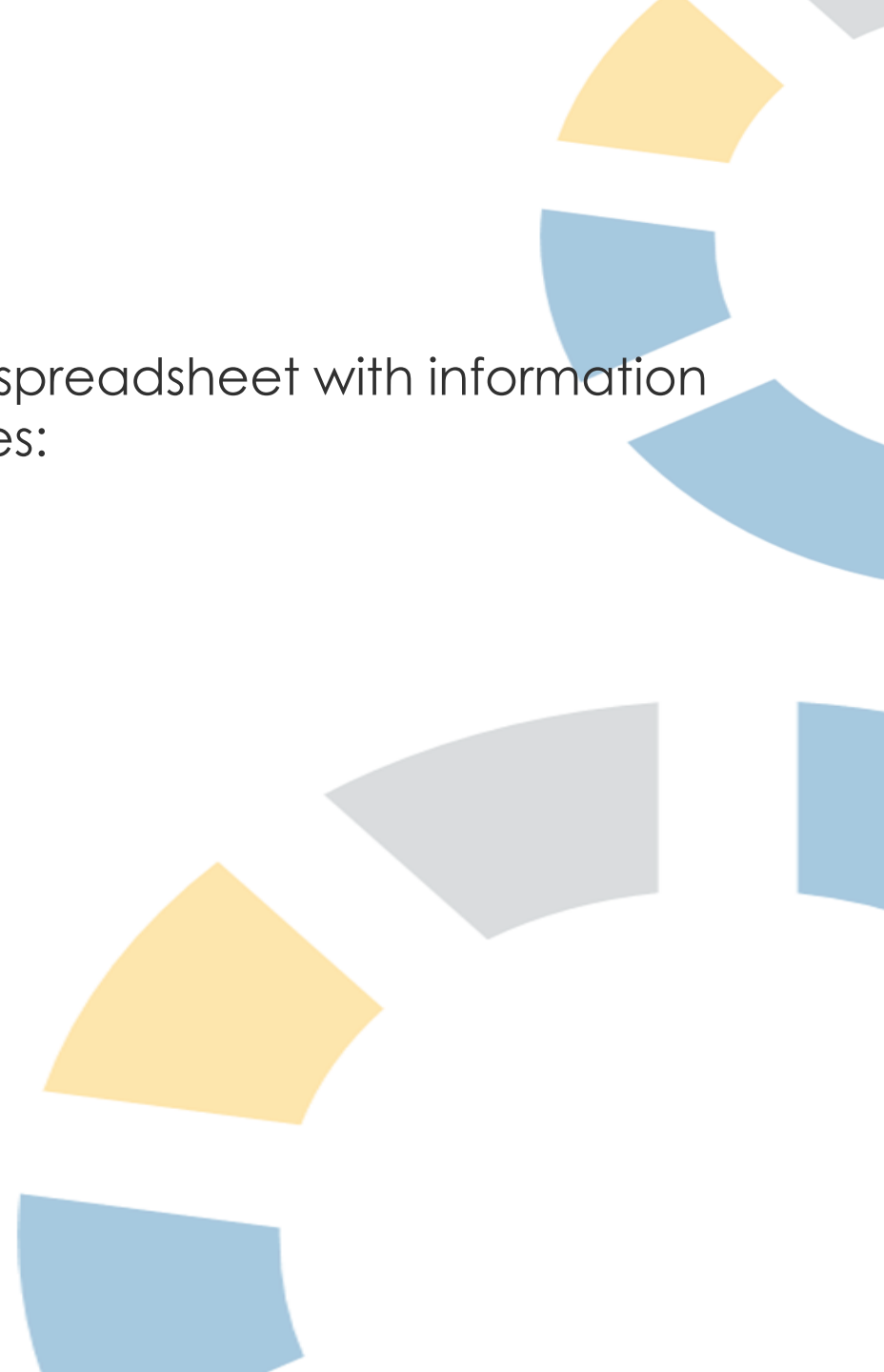
Reset Run Download

Data Upload
Analysis Tools
Data Report

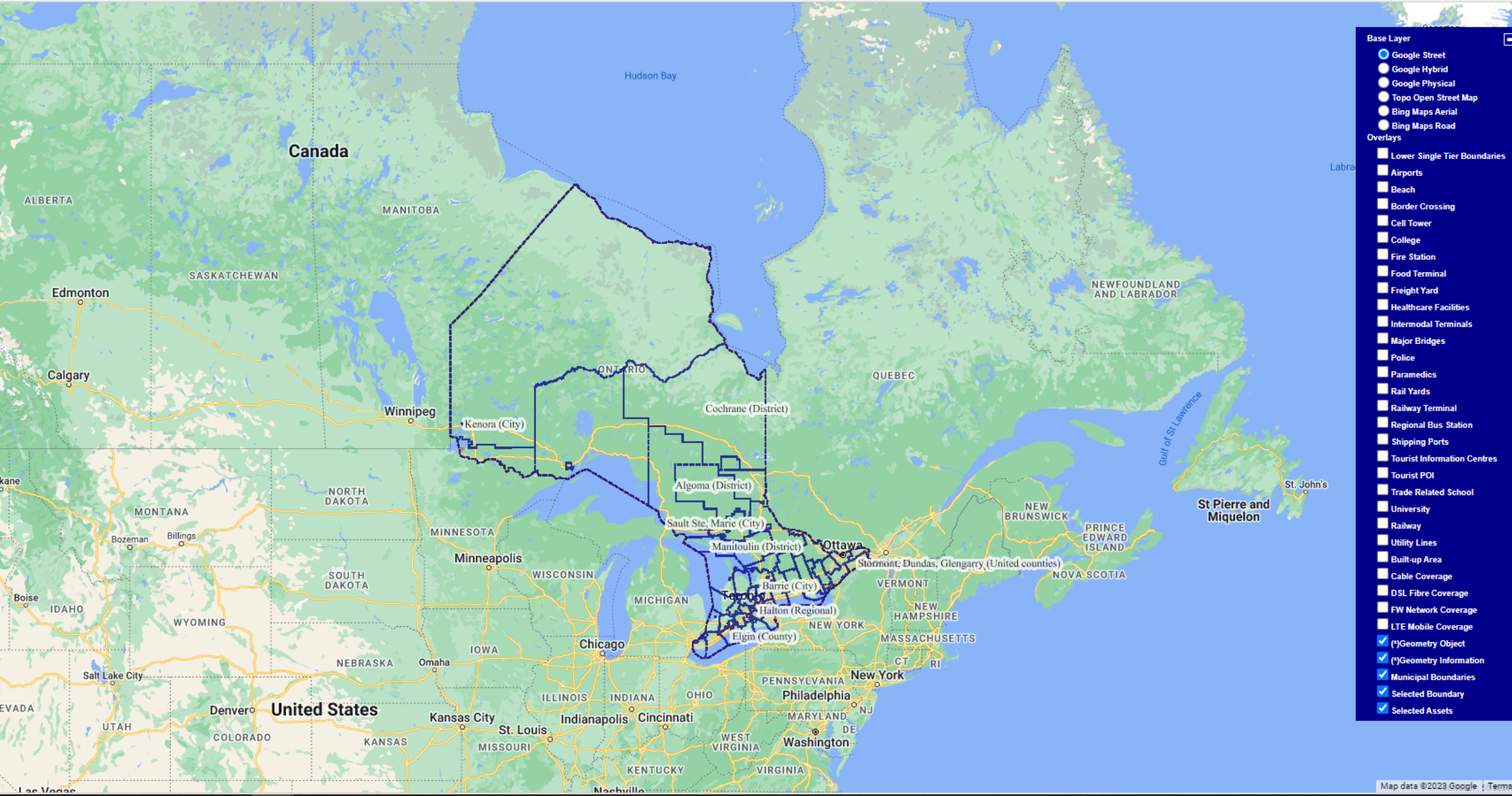


Downloading Asset Information

- When you click “download”, you will receive an Excel spreadsheet with information on each of the selected assets. This information includes:
 - Business name
 - Business owner
 - Contact info (phone, email)
 - Address
 - Location (latitude and longitude)
 - Industry (NAICS)

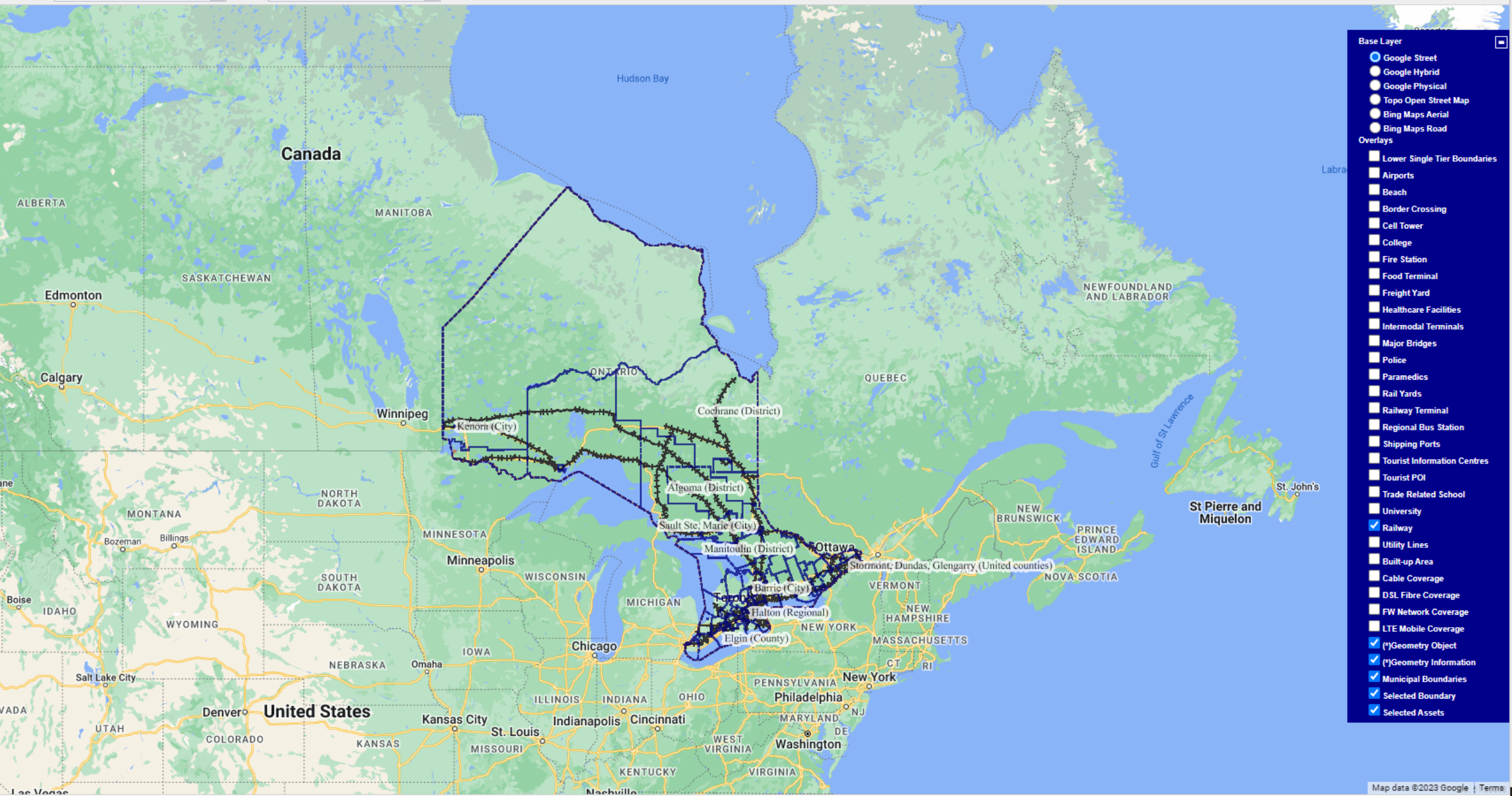


Sectors: First select industry sectors ... Area: Second select geographic area ..



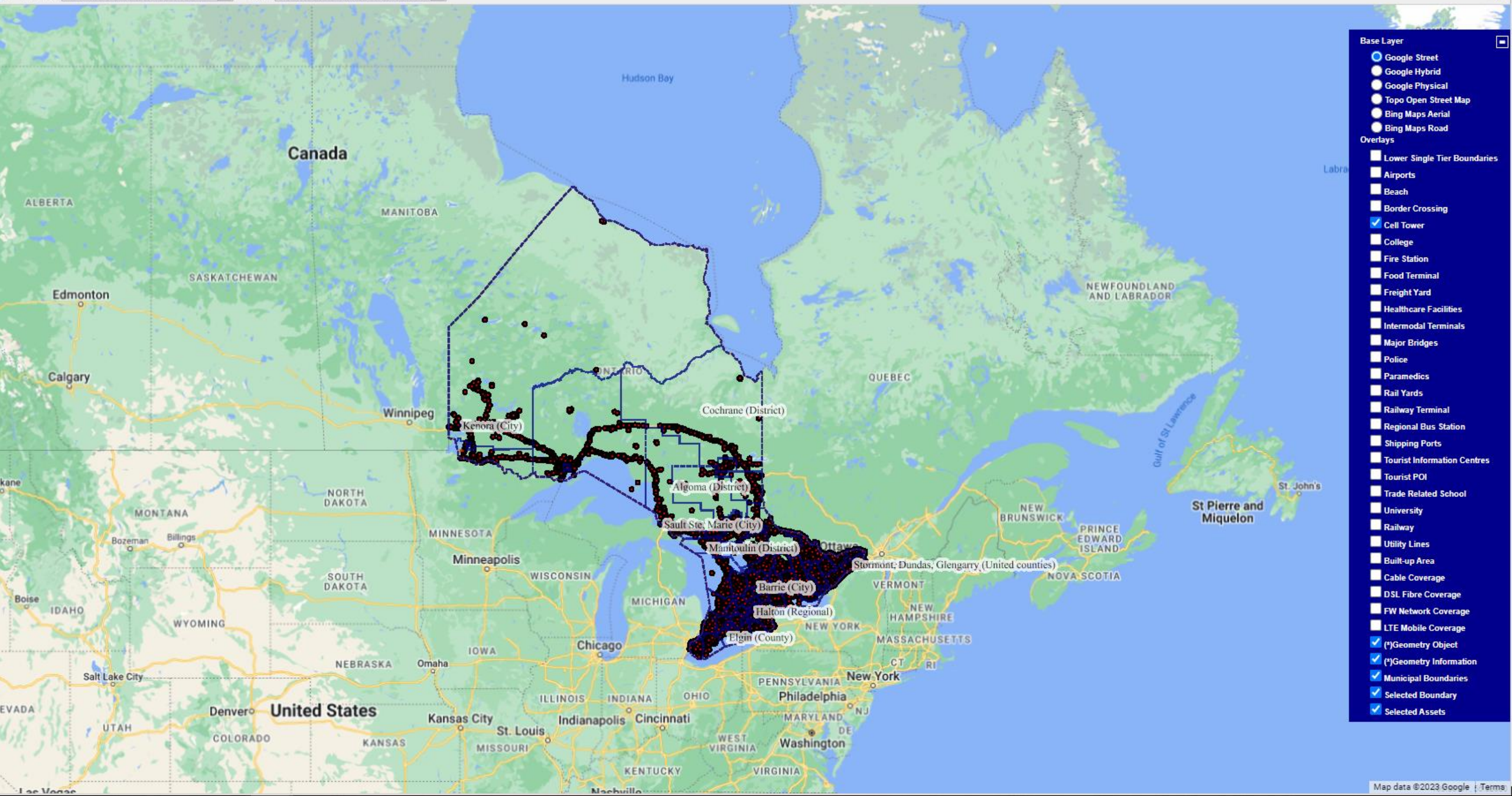
- Base Layer
 - Google Street
 - Google Hybrid
 - Google Physical
 - Topo Open Street Map
 - Bing Maps Aerial
 - Bing Maps Road
- Overlays
 - Lower Single Tier Boundaries
 - Airports
 - Beach
 - Border Crossing
 - Cell Tower
 - College
 - Fire Station
 - Food Terminal
 - Freight Yard
 - Healthcare Facilities
 - Intermodal Terminals
 - Major Bridges
 - Police
 - Paramedics
 - Rail Yards
 - Railway Terminal
 - Regional Bus Station
 - Shipping Ports
 - Tourist Information Centres
 - Tourist POI
 - Trade Related School
 - University
 - Railway
 - Utility Lines
 - Built-up Area
 - Cable Coverage
 - DSL Fibre Coverage
 - FW Network Coverage
 - LTE Mobile Coverage
 - (*)Geometry Object
 - (*)Geometry Information
 - Municipal Boundaries
 - Selected Boundary
 - Selected Assets

Sectors: First select industry sectors ... Area: Second select geographic area ...



- Base Layer**
- Google Street
 - Google Hybrid
 - Google Physical
 - Topo Open Street Map
 - Bing Maps Aerial
 - Bing Maps Road
- Overlays**
- Lower Single Tier Boundaries
 - Airports
 - Beach
 - Border Crossing
 - Cell Tower
 - College
 - Fire Station
 - Food Terminal
 - Freight Yard
 - Healthcare Facilities
 - Intermodal Terminals
 - Major Bridges
 - Police
 - Paramedics
 - Rail Yards
 - Railway Terminal
 - Regional Bus Station
 - Shipping Ports
 - Tourist Information Centres
 - Tourist POI
 - Trade Related School
 - University
 - Railway
 - Utility Lines
 - Built-up Area
 - Cable Coverage
 - DSL Fibre Coverage
 - FW Network Coverage
 - LTE Mobile Coverage
 - (*)Geometry Object
 - (*)Geometry Information
 - Municipal Boundaries
 - Selected Boundary
 - Selected Assets

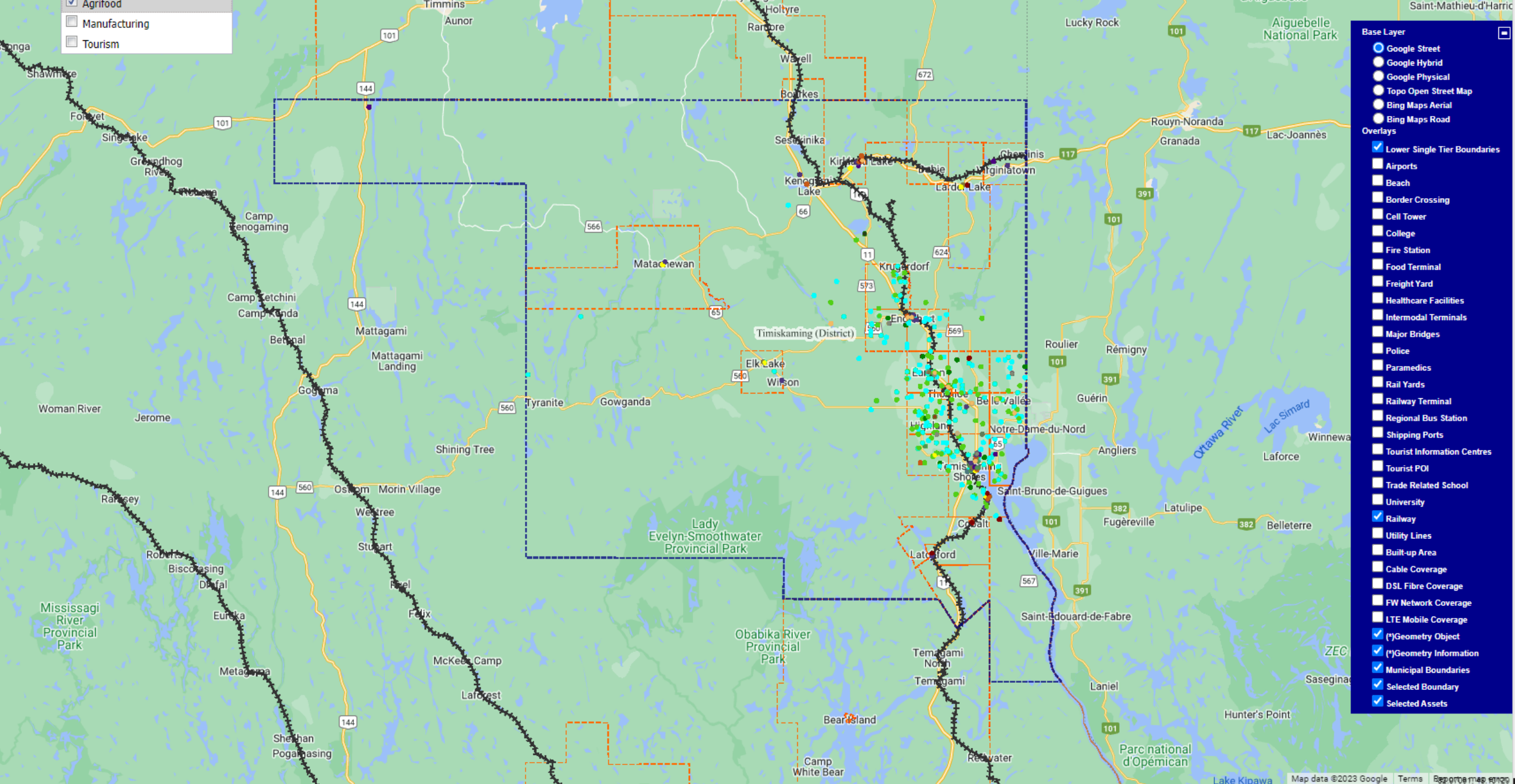
Sectors: First select industry sectors ...
Area: Second select geographic area ..



- Base Layer**
- Google Street
 - Google Hybrid
 - Google Physical
 - Topo Open Street Map
 - Bing Maps Aerial
 - Bing Maps Road
- Overlays**
- Lower Single Tier Boundaries
 - Airports
 - Beach
 - Border Crossing
 - Cell Tower
 - College
 - Fire Station
 - Food Terminal
 - Freight Yard
 - Healthcare Facilities
 - Intermodal Terminals
 - Major Bridges
 - Police
 - Paramedics
 - Rail Yards
 - Railway Terminal
 - Regional Bus Station
 - Shipping Ports
 - Tourist Information Centres
 - Tourist POI
 - Trade Related School
 - University
 - Railway
 - Utility Lines
 - Built-up Area
 - Cable Coverage
 - DSL Fibre Coverage
 - FW Network Coverage
 - LTE Mobile Coverage
 - (*)Geometry Object
 - (*)Geometry Information
 - Municipal Boundaries
 - Selected Boundary
 - Selected Assets

Sectors: **Agrifood** Agrifood Manufacturing Tourism

Area: **Timiskaming (District)**



Base Layer

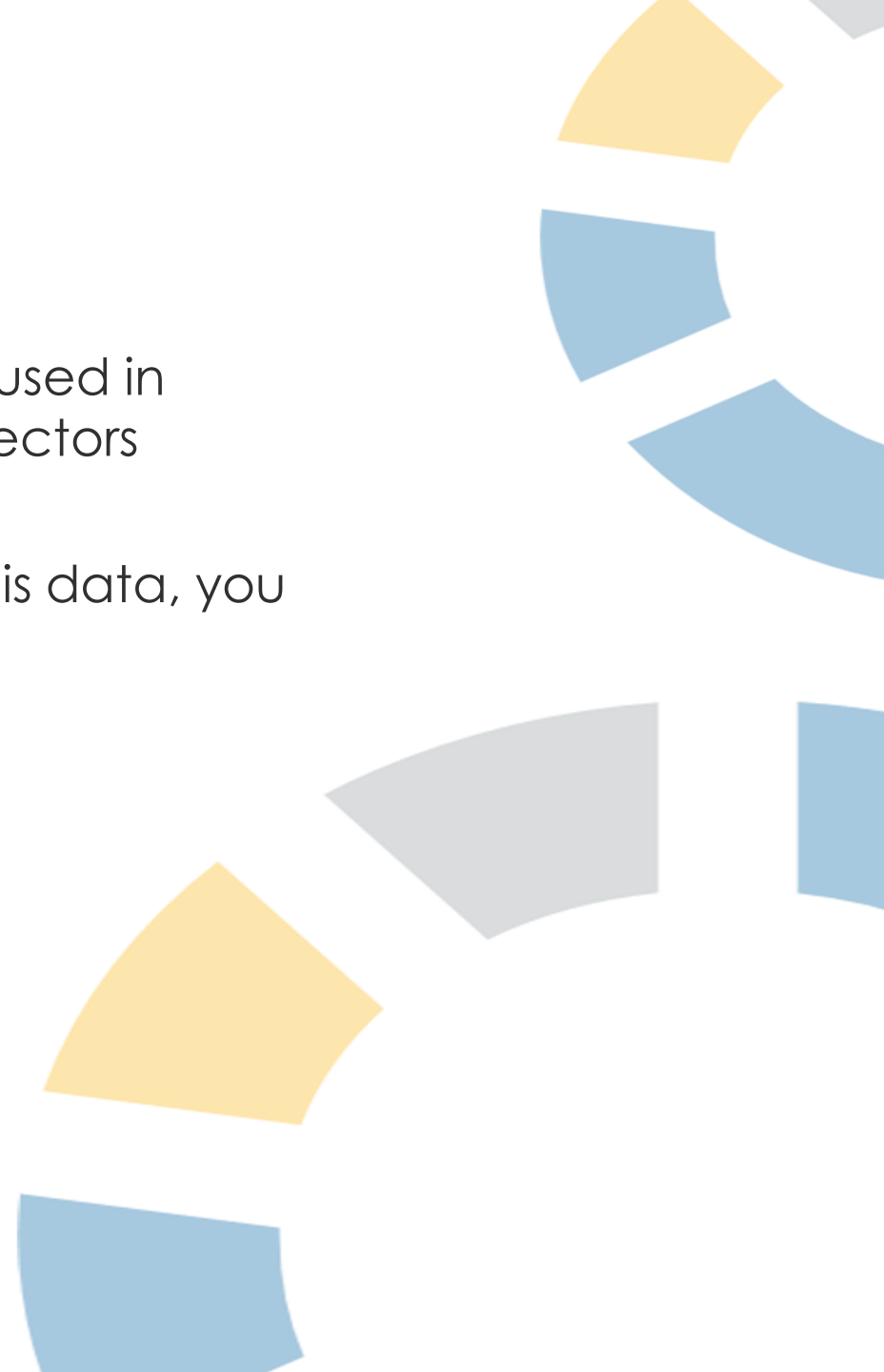
- Google Street
- Google Hybrid
- Google Physical
- Topo Open Street Map
- Bing Maps Aerial
- Bing Maps Road

Overlays

- Lower Single Tier Boundaries
- Airports
- Beach
- Border Crossing
- Cell Tower
- College
- Fire Station
- Food Terminal
- Freight Yard
- Healthcare Facilities
- Intermodal Terminals
- Major Bridges
- Police
- Paramedics
- Rail Yards
- Railway Terminal
- Regional Bus Station
- Shipping Ports
- Tourist Information Centres
- Tourist POI
- Trade Related School
- University
- Railway
- Utility Lines
- Built-up Area
- Cable Coverage
- DSL Fibre Coverage
- FW Network Coverage
- LTE Mobile Coverage
- (*)Geometry Object
- (*)Geometry Information
- Municipal Boundaries
- Selected Boundary
- Selected Assets

Summary

- ConnectON provides geo-mapped data that can be used in numerous ways by organizations operating in various sectors
- To learn more about ConnectON and get access to this data, you can visit <https://www.connecton.ca>
- Organizations in Northern Ontario can also go to <https://www.northernpolicy.ca/connectnorth>



NORTHERN
POLICY INSTITUTE

INSTITUT DES POLITIQUES
DU NORD

Giwednong Aakomenjigewin Teg
b ΔC2-4σ-4\ P-7N.δ\ 4D^9-ΔbΓ\
Institu dPolitik di Nor
Aen vawnd nor Lee lway La koonpayeen

THANK YOU. MARSEE. Pə̀ə̀^n^dΓN^P MERCI.
MIIGWECH.

1 (807) 343-8956 | info@northernpolicy.ca

www.northernpolicy.ca



[/NorthernPolicy](#)