

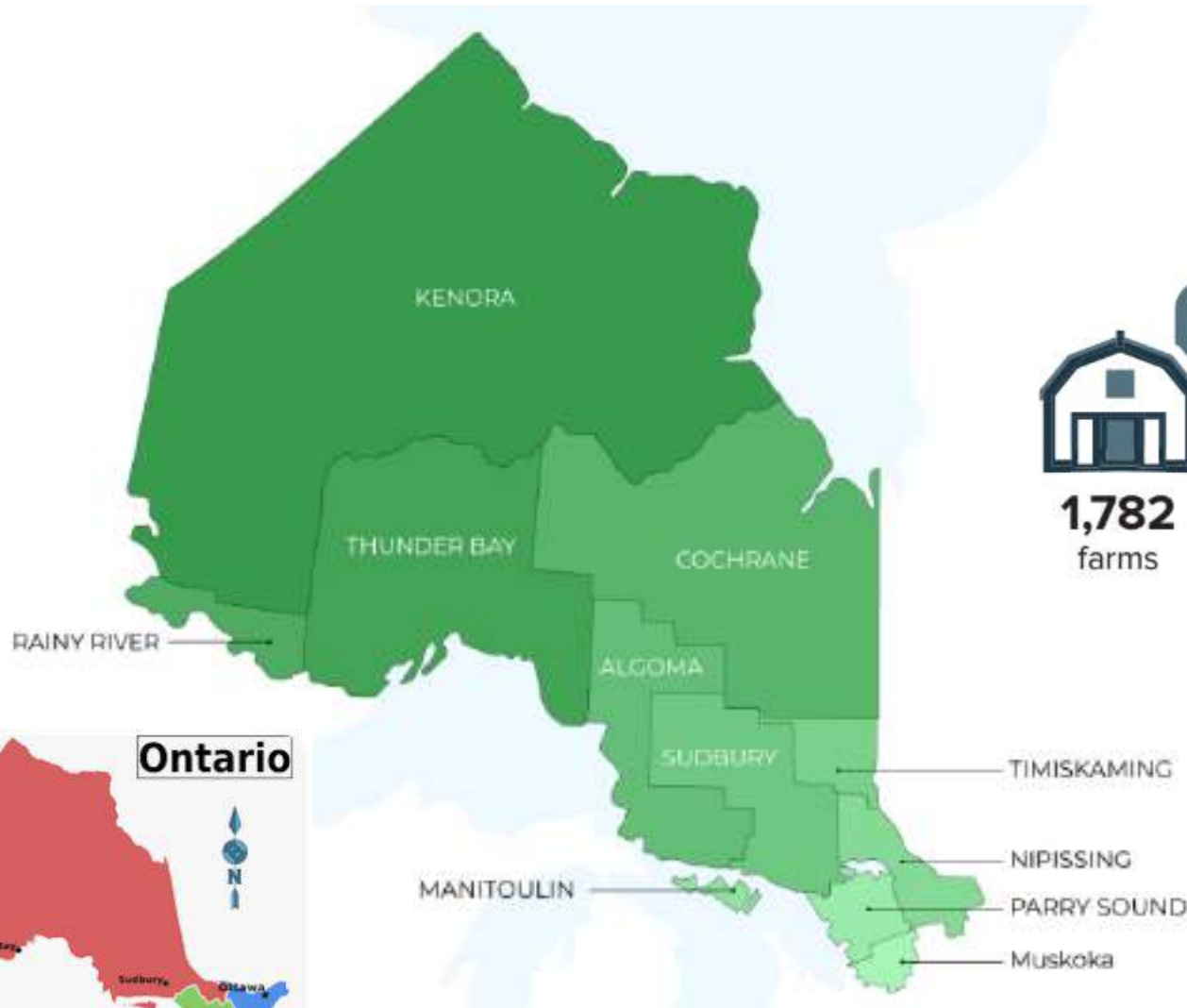


**Ontario
Federation of
Agriculture**

An aerial photograph of a rural farmstead in Northern Ontario. The farm includes several buildings, a large white greenhouse, and silos. The surrounding landscape is a patchwork of agricultural fields in various stages of growth, with some fields appearing brown and others green. A road or path runs through the center of the farm. In the background, a large body of water is visible under a clear sky.

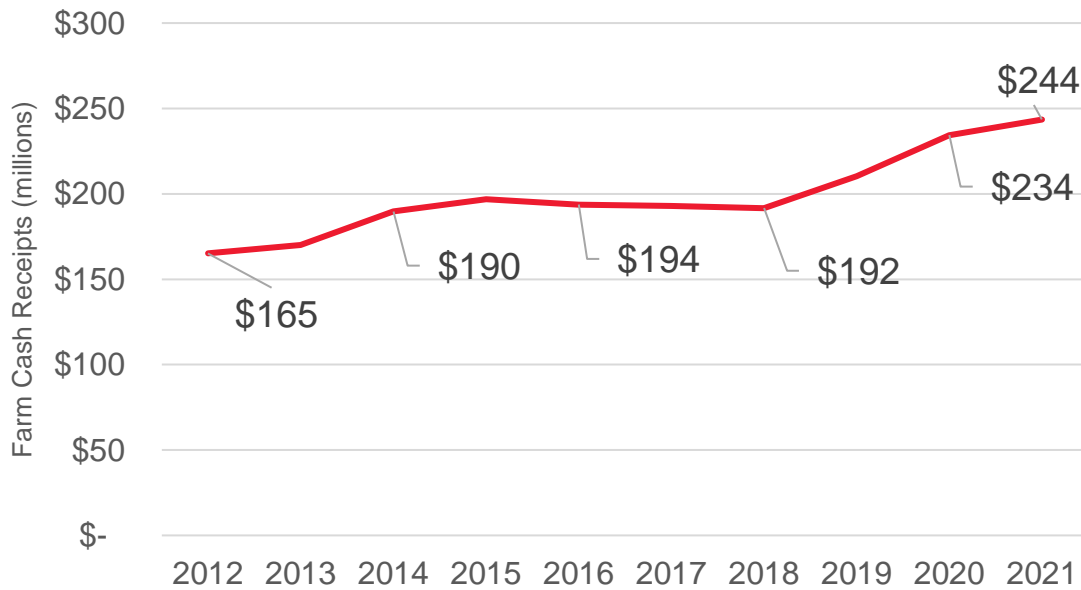
Economic Contributions of Agriculture in Northern Ontario

Ag in the North

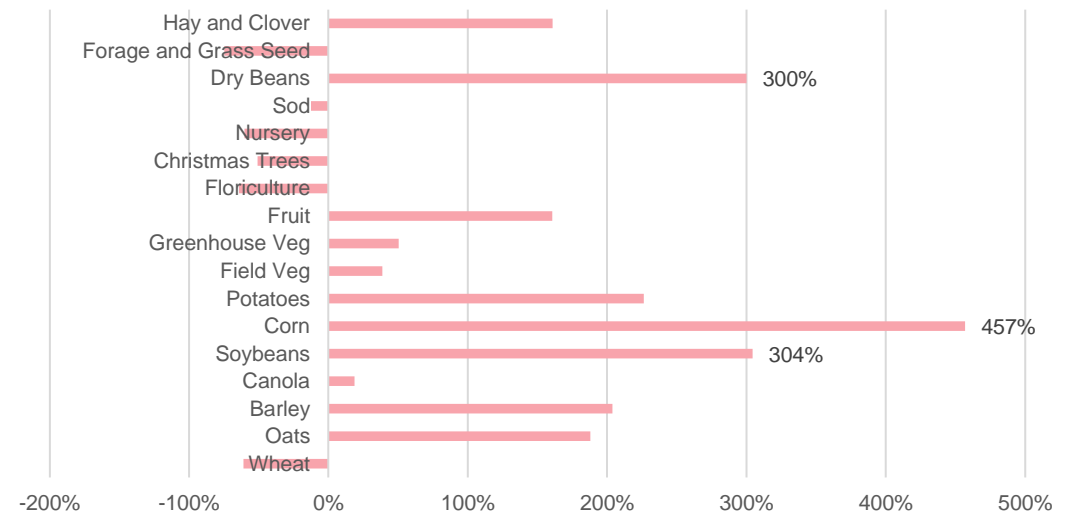
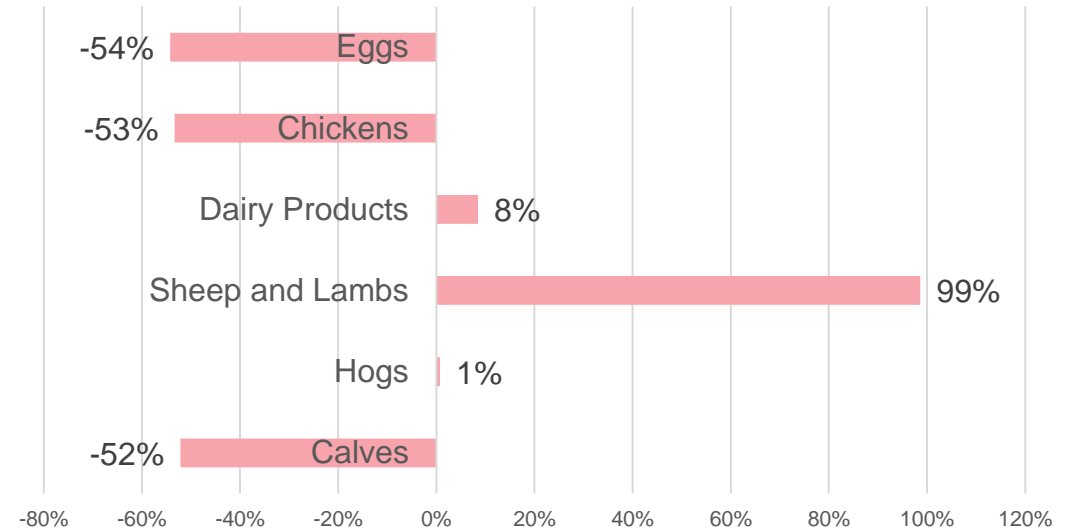


www.farmnorth.com

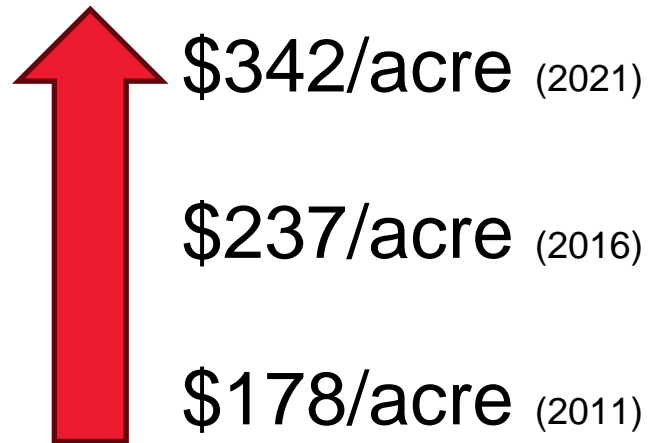
Farm Cash Receipts



% Change in Farm Cash Receipts



Farm Cash Receipts per Acre



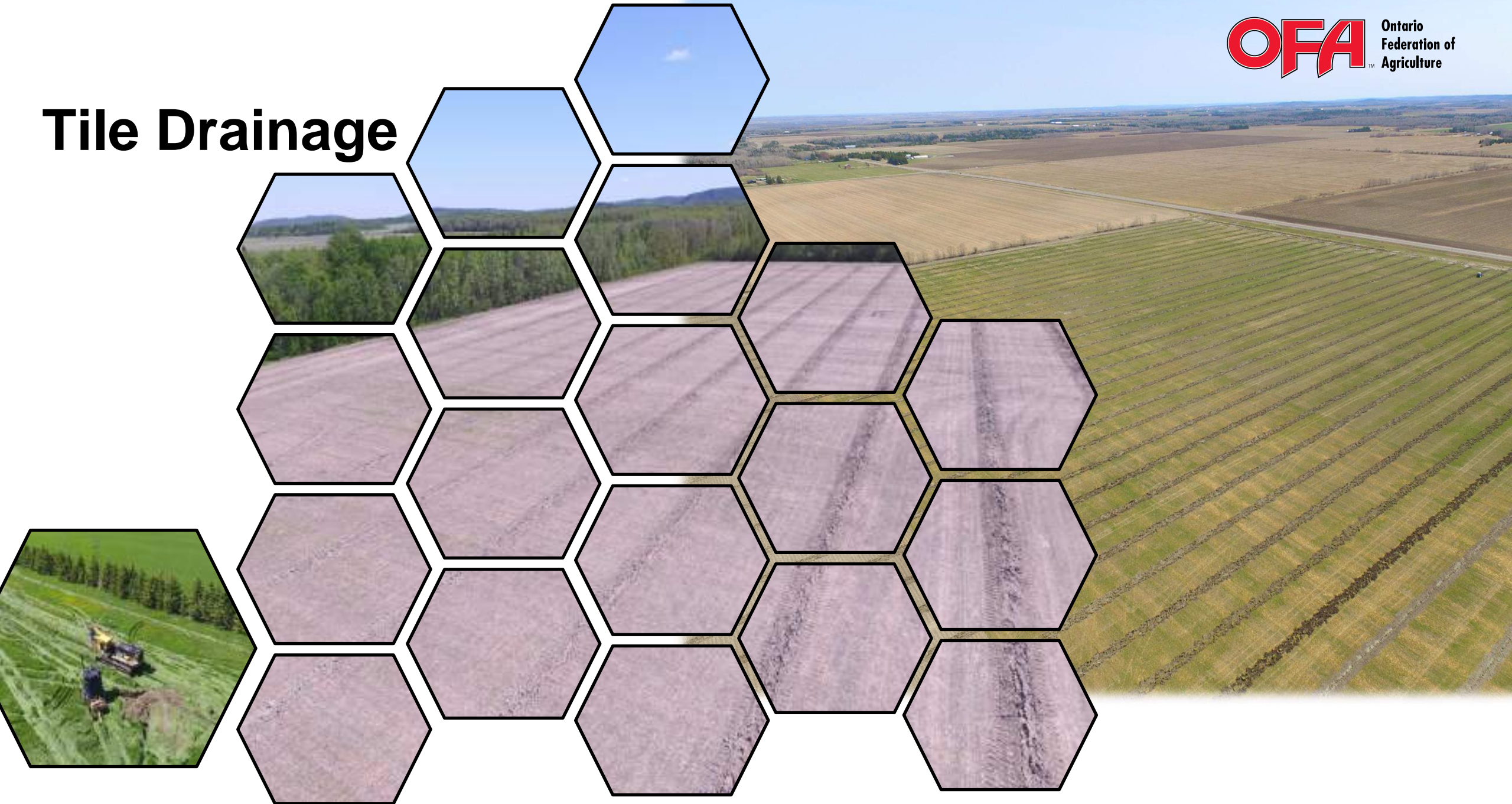
- Dairy
- Grains & Oilseeds
- Cattle



Provincial Contributions

Region	Number of Jobs	GDP (Millions of dollars)
Algoma	794	\$53
Cochrane	747	\$50
Greater Sudbury	238	\$16
Kenora	115	\$8
Manitoulin	665	\$44
Nipissing	533	\$36
Rainy River	981	\$65
Sudbury	612	\$41
Thunder Bay	998	\$66
Timiskaming	2,161	\$144
Parry Sound	173	\$12
Total	8,008	\$534

Tile Drainage



Municipal Staff/Council Resources

RESOURCE



Guide to Support Agricultural Growth in Your Municipality

The Ontario Federation of Agriculture (OFA) has identified municipal impediments and opportunities to support growth in Ontario's agriculture and agri-food businesses.

While many policies are established at the provincial and federal level, there are many best practices that municipalities can implement to support their agri-food sector.

Municipalities can support agricultural economic development through:

- i. land use planning,
- ii. property assessment and taxation,
- iii. financial incentives and reduced costs,
- iv. community and regional food planning, and
- v. consultation with the farming community.

This Guide encompasses a Checklist to Support Agricultural Growth in Your Municipality. It provides information on how to implement the actions in the Checklist, and why they are important for supporting the agricultural sector in your municipality.

I. Land Use Planning

To prime agricultural areas, permitted uses and activities are: agricultural uses; agriculture-related uses; and on-farm diversified uses, as outlined in the [2020 Provincial Policy Statement](#).

Agricultural uses are agricultural and farming activities, agriculture-related uses are directly related to the farming operation, and on-farm diversified uses are uses that are secondary to the principal agricultural use of the property, and are listed in area.

Further information can be found in the [Guidelines on Permitted Uses in Ontario's Provincial Policy Statement](#), developed by the Ontario Ministry of Agriculture, Food and Rural Affairs.

As outlined in the Planning Act, municipal Official Plans and Zoning By-Laws shall be consistent with the 2020 Provincial Policy Statement (PPS).

Follow us on social media: @ofaonca, #ofaonca, #ofaonca, #ofaonca

<https://ofa.on.ca/GrowAg>



ENGAGING MUNICIPAL COUNCIL AND STAFF

TEMPLATES AND RESOURCES

Resources to Cultivate Connections



RESOURCE



Agriculture Matters: A Guide for Municipal Councillors and Staff

The purpose of this Guide is to provide an overview of issues affecting farm businesses today, as well as identifying opportunities for local communities to support this untapped, and sometimes undervalued, economic sector. It is available electronically at ofa.on.ca/GrowAg.

Farming is a unique sector which aims to grow plants and animals under environmental conditions that are rarely under a farmer's control. The variable timing of planting season, the length and intensity of the growing season, as well as economic and political factors can intensify the challenges associated with operating a farm business. Farmers are willing to engage with municipalities on topics affecting the sector, however, any outreach should consider the time of year and should engage farmers early and often throughout the process.

The Ontario Federation of Agriculture (OFA)'s 51 County and Regional Federations offer strong, grassroots leadership, and should be your first point of contact when addressing municipal issues affecting agricultural businesses in your community.

Producing Prosperity in Ontario

Ontario's agriculture and agri-food sectors are leading economic drivers for the province, contributing over \$47 billion in GDP and employing over 750,000 Ontarians. OFA's policy initiative, Producing Prosperity in Ontario, calls for greater investment in Ontario's agri-food sector and rural communities as an effective strategy to deliver economic growth and prosperity for all Ontarians.

Distributing economic development will create new jobs, enable new affordable housing options, improve food security, and contribute to environmental stewardship. When we invest in our small communities, we improve the physical and social infrastructure in rural Ontario; generating new opportunities to work and live in communities across the province. This is beneficial for rural Ontario and alleviates the growth pressure in our urban communities.

The Ontario Federation of Agriculture (OFA) proudly represents more than 38,000 farm family members across Ontario, supporting our members and the agri-food industry on issues, legislation and regulations governed by all levels of government. OFA works to ensure the agri-food sector and our rural communities are included, consulted, and considered in any new and changing legislation that impacts the sustainability of our farm businesses. We are the leading agricultural advocate for Ontario farmers, businesses, and communities.

Local & Regional Snapshots

Agriculture at a Glance

43.07.2021

Local Snapshot
NORTH BRUNSWICK COUNTY
COMBINE HARVESTING

840 Farms
203,446 Acres of farmland
242 acres in the average farm

21% of farm products directly to the consumer
6 farms operate a CSA
29 farms sell directly from their farm, at markets, or on their website
156 farms sell directly from their farm, at markets, or on their website

Economic Contributions in 2021

Local Impact
The local ag-food sector employed **5,085** people through **1,651** local ag-food business establishments

Farm Cash Receipts
\$174 million in Farm Cash Receipts
Dairy & Cereals, Cattle, Poultry & Eggs

Across the Province
Farm cash receipts generated by local farms in 2021 supported **\$380 million** in GDP and **5,212** jobs in the ag-food sector from farm to fork across Ontario

Farm Facts

- 17.3% of Ontario's greenhouse gas emissions are from the ag-food sector
- 21.0% of farms are organic
- 71.4% of farms are certified

OFA and NFA logos at the bottom.

Agriculture at a Glance

43.07.2021

Regional Snapshot
ECONOMY & EMPLOYMENT
ONTARIO AGRICULTURAL SECTOR

6,720 Farms
1,997,046 Acres of farmland
297 acres in the average farm

18% of farm products directly to the consumer
69 farms operate a CSA
203 farms sell at farmers' markets
836 farms sell directly from their farm, at markets, or on their website

Economic Contributions in 2021

Local Impact
The local ag-food sector employed **83,670** people through **11,589** local ag-food business establishments

Farm Cash Receipts
\$1.7 billion in Farm Cash Receipts
Dairy & Cereals, Cattle, Poultry & Eggs

Across the Province
Farm cash receipts generated by local farms supported **\$3.8 billion** in GDP and **54,370** jobs in the ag-food sector from farm to fork across Ontario

Farm Facts

- 16.3% of Ontario's greenhouse gas emissions are from the ag-food sector
- 20.9% of farms are organic
- 67.2% of farms are certified

OFA logo at the bottom.

Ontario Agriculture at a Glance

43.07.2021

Over 50,000 Farms
11.7 million Acres of farmland
242 acres in the average farm

17% of farm products directly to the consumer
323 farms operate a CSA
1,990 farms sell directly from their farm, at markets, or on their website
5,200 farms sell directly from their farm, at markets, or on their website

Economic Contributions

Ontario's ag-food sector supported **\$47 billion** in GDP in 2021
Ontario's ag-food sector employed **over 750,000** people
10% of the Ontario labour force
\$20 billion in ag-food products annually

Farm Facts

- 17.5% of Ontario's greenhouse gas emissions are from the ag-food sector
- 21% of farms are organic
- Nearly 60% of Ontario farms are certified

OFA logo at the bottom.

<https://ofa.on.ca/communityofpractice/> (Link at bottom of page)

